

FC CE

VOLT+ AMP

STAND ALONE AUDIO AMPLIFIER



FOR MORE INFORMATION PLEASE CONTACT
GLOBALSALES@ALLO.COM

allo.com

VOLT+ AMP

The TPA3116/18 class D amplifier IC is a leap in terms of audio quality.

Our board is a high quality implementation of the stock design.

- Using TPA3118 (better grounding of main IC)
- Anti-Pop circuit
- Bootstrap snubber mod
- Brand name components as per picture
- Radio avoidance switch (to reduce interference)
- PCB with extra copper (since on transient's current can spike to 5A)

Note that PCB comes in 2 flavors:

1. **Volt** is a shield and beneath it has connector that will plug into our DACs (Piano 1.1 and Piano 2.1). It has no RCA inputs. (Capacitance Multiplier can be added as a standalone board).

2. **Volt+** is a standalone amplifier with RCA IN (stereo). In addition to everything that the Volt has, we have added a circuit in the power supply that will reject spikes and noise to about 60db. The name of the circuit is "Capacitance Multiplier". Please note that Class D amplifier needs a quiet PSU.

Volt+ can be used with our DACs through the RCA input, as a standalone board.

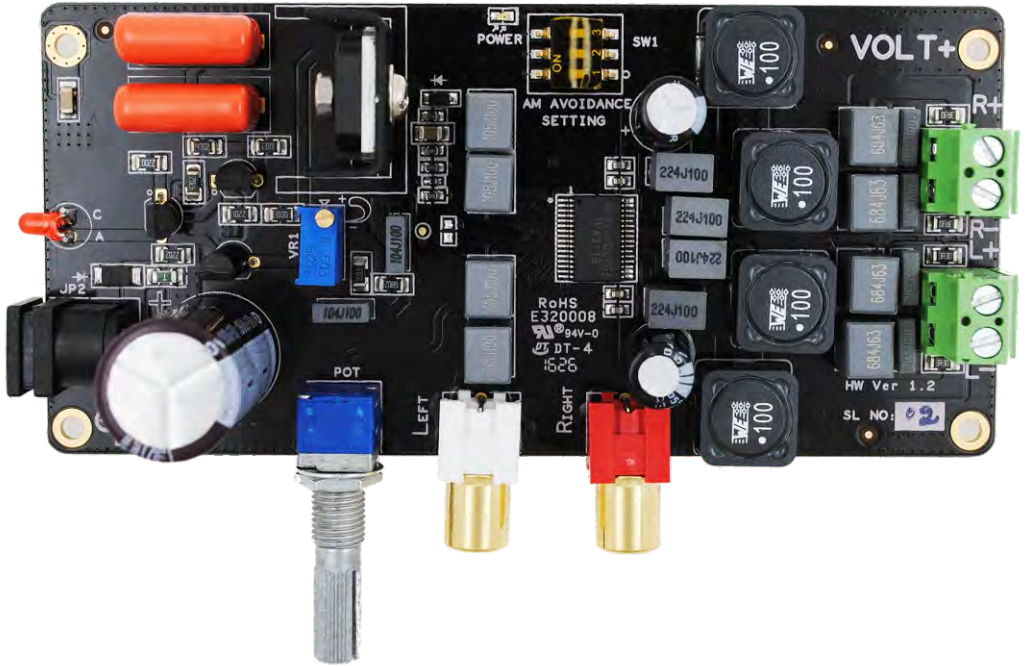
Key Features

- This class D amplifier goes up to 2 x 50W Max
- The components used are specifically designed for high end audio devices (Würth Inductor, TI chipset, film capacitors and $\pm 1\%$ thin film resistors)
- VOLT AMP boasts 4 output filters, 4 EMI Snubbers, 4 bootstrap capacitors and gain setting components
- We are using CM filter circuits in power section to reduce maximum ripples in power
- We are using 10K logarithmic Potentiometer for Volume control. Available with different Input connectors: 2 x RCA
- Comes in two flavors

Technical Specifications

- Chipset: TPA3118D2
- Output: 2 x 50W (Max) into a 4 to 8- Ω BTL Load
- Class D Operation: 90% POWER EFFICIENCY
- SNR: 102dB
- Supply Voltage: UP TO 24V DC
- Board Size: LWH = 82.83mm* 125.5mm * 40.2mm
- Temp Range: -40°C to 85°C Ambient

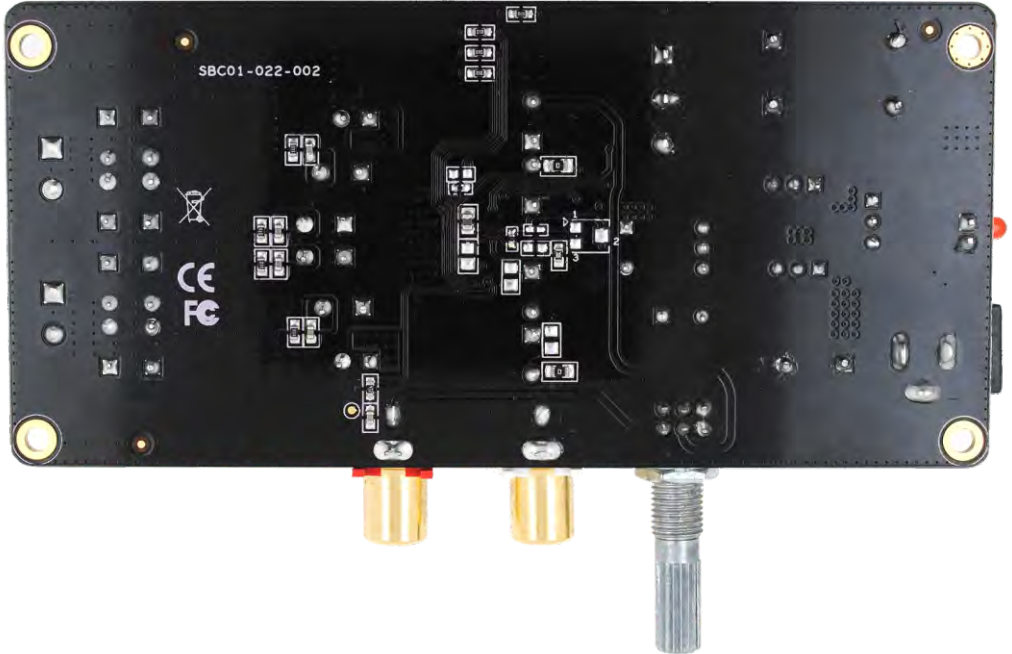
Top View



FOR MORE INFORMATION PLEASE CONTACT
GLOBALSALES@ALLO.COM

allo.com

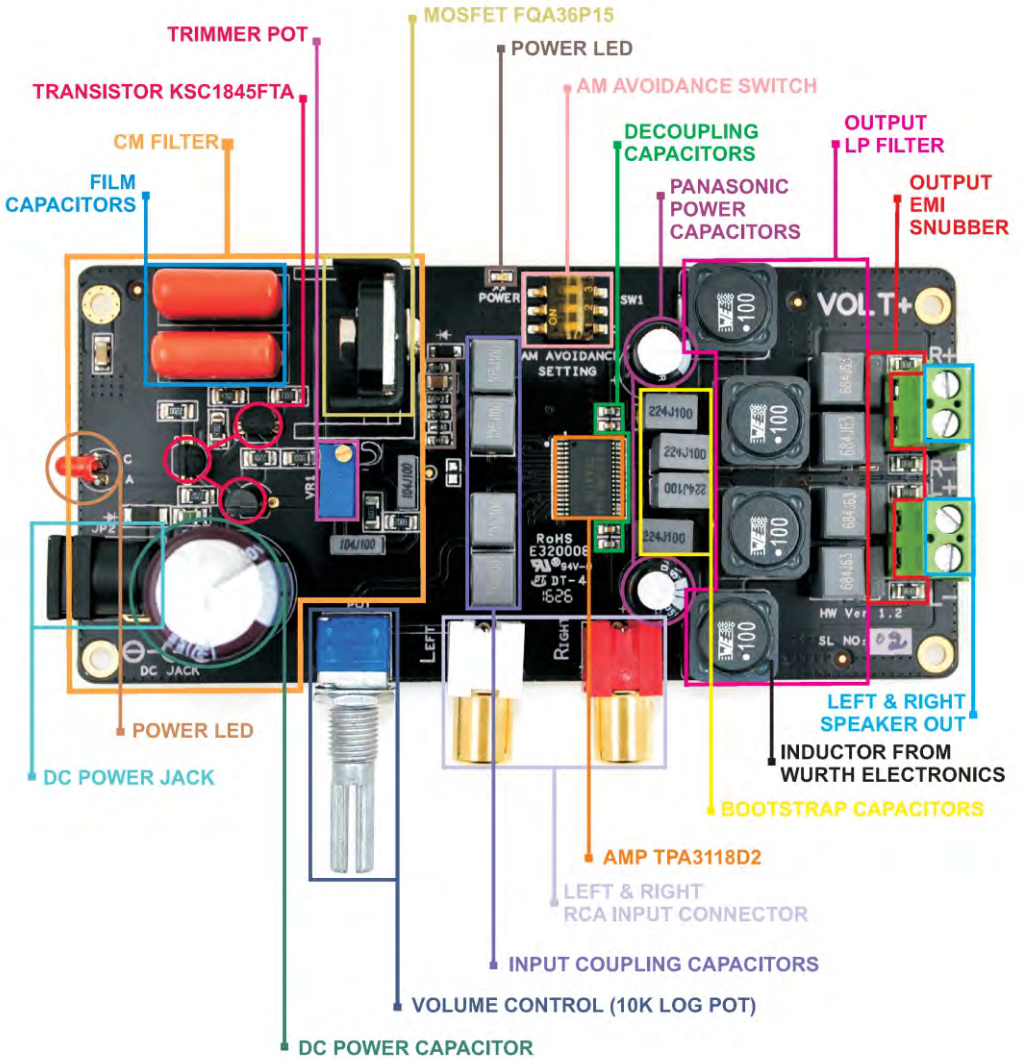
Bottom View



FOR MORE INFORMATION PLEASE CONTACT
GLOBALSALES@ALLO.COM

allo.com

PARTS LABEL OF VOLT + SHIELD



FOR MORE INFORMATION PLEASE CONTACT
GLOBALSALES@ALLO.COM

allo.com