

# GSM Gateway

## Quick Installation Guide



## Copy Right

Copyright © 2014 Allo.com. All rights reserved.

No part of this publication may be copied, distributed, transmitted, transcribed, stored in a retrieval system, or translated into any human or computer language without the prior written permission of Allo.com. This document has been prepared for use by professional and properly trained personnel, and the customer assumes full responsibility when using it.

## Proprietary Rights

The information in this document is Confidential to Allo.com and is legally privileged. The information and this document are intended solely for the addressee. Use of this document by anyone else for any other purpose is unauthorized. If you are not the intended recipient, any disclosure, copying, or distribution of this information is prohibited and unlawful.

## Disclaimer






Information in this document is subject to change without notice and should not be construed as a commitment on the part of **allo.com**. And does not assume any responsibility or make any warranty against errors. It may appear in this document and disclaims any implied warranty of merchantability or fitness for a particular purpose.

## About this manual

This manual describes the Allo product application and explains how to work and use its major features. It serves as a means to describe the user interface and how to use it to accomplish common tasks. This manual also describes the underlying assumptions and users make the underlying data model.

## Document Conventions

In this manual, certain words are represented in different fonts, typefaces, sizes, and weights. This highlighting is systematic; different words are represented in the same style to indicate their inclusion in a specific category. Additionally, this document has different strategies to draw User attention to certain pieces of information. In order of how critical the information is to your system, these items are marked as a note, tip, important, caution, or warning.

| Icon  | Purpose                  |
|---|--------------------------|
|    | <b>Note</b>              |
|   | <b>Tip/Best Practice</b> |
|  | <b>Important</b>         |
|  | <b>Caution</b>           |
|  | <b>Warning</b>           |

- **Bold** indicates the name of the menu items, options, dialog boxes, windows and functions.
- The color blue with underline is used to indicate cross-references and hyperlinks.
- Numbered Paragraphs - Numbered paragraphs are used to indicate tasks that need to be carried out. Text in paragraphs without numbering represents ordinary information.
- The Courier font indicates a command sequence, file type, URL, Folder/File name e.g. [www.allo.com](http://www.allo.com)

## Support Information

Every effort has been made to ensure the accuracy of the document. If you have comments, questions, or ideas regarding the document contact online support: <http://support.allo.com>

## Table of Contents

|                                   |   |
|-----------------------------------|---|
| About this manual .....           | 3 |
| Document Conventions.....         | 3 |
| Hardware Setup .....              | 5 |
| Accessing the Web GUI .....       | 6 |
| Software Installation Steps ..... | 8 |
| Creating SIP Trunks.....          | 8 |
| Creating GSM Lines .....          | 9 |
| Create/Compose SMS .....          | 9 |

## Hardware Setup

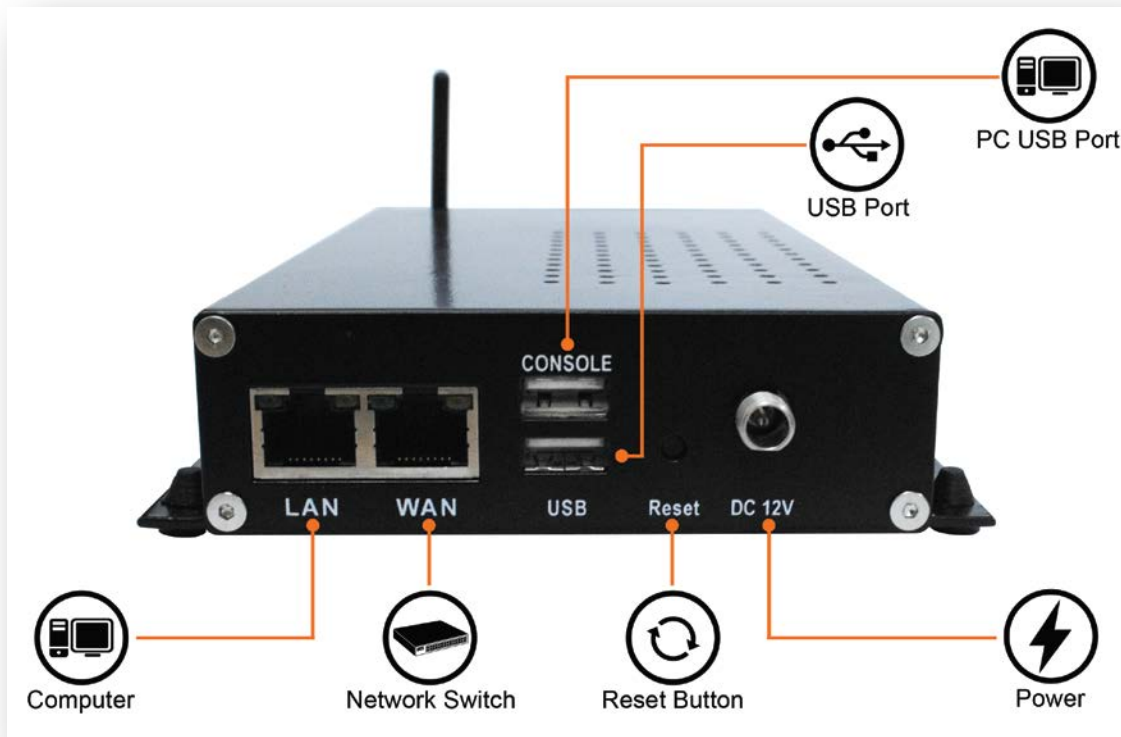


Figure 1: Hardware Setup

1. Unpack the items from the box
2. Plug one end of the RJ45 Ethernet cable to your PC & other end into the Management Port (LAN) of the GSM Gateway.
3. Plug one end of the RJ45 Ethernet cable into your Network Switch & other end into the WAN port of the GSM Gateway.



*Use Straight-through Ethernet cable to connect between the unit & Router/Switch/PC*

4. Insert the GSM SIM in to the GSM Channels.
5. Plug the power cable to the GSM Gateway; wait until the Gateway boot up completely. Configure your GSM Gateway according to the instructions below.

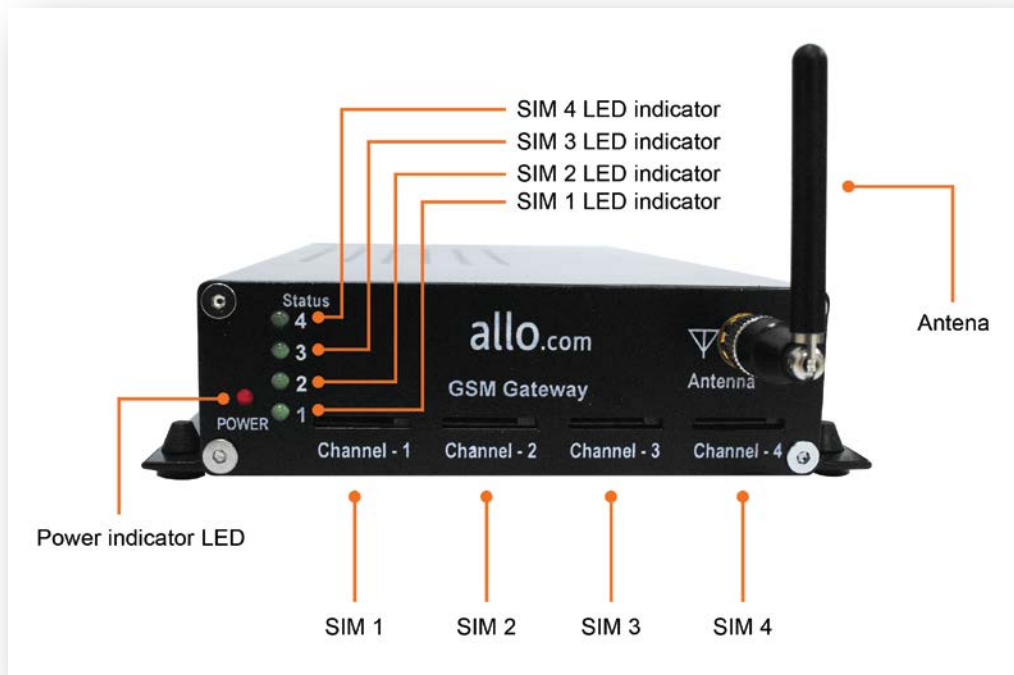


Figure 2: Rear View

### Notification LEDs



4 LED's indicates SIM Connectivity, if it's blinking SIM's are presented the connectivity is there. LED's stay glow- Module connectivity is not there, present no SIM.

## Accessing the Web GUI

GSM Gateway WEB GUI can be accessed either through WAN or Management Interface (LAN)

- 1) Make the setup as described in Hardware setup section, Lets access the WebGUI through Management Interface (LAN).
- 2) Change the Network setting of the PC in manual mode (i.e. Static IP mode). Assign the IP address to the PC in the range of 192.168.113.xxx (E.g:192.168.113.10), net mask as 255.255.255.0 and gateway & DNS as 192.168.113.1.
- 3) Launch the web browser and enter the URL <http://192.168.113.1> which is the default IP address of the Management interface (LAN) of the GSM Gateway.



Figure 3: Login page

- 4) Login using the default username & password (Default: Username: admin; Password: admin). It takes you to change the password and login again with the new password. Observe the WAN IP address on the dashboard, this will be used to access the GUI from the WAN interface.
- 5) If your network is not enabled with DHCP server, configure the WAN port IP address manually in the **SETTINGS > Network Settings** section as per your requirement.
- 6) If you know the SIM No, you can directly manage the GSM Gateway using below comment by sending the SMS.

**ALLOGSM "gateway password" INFO** (Command to fetch the IP address of the gateway and basic status of GSM spans)

For an Example: ALLOGSM admin INFO



*Recommended Web Browser to access GUI is Mozilla Firefox.*



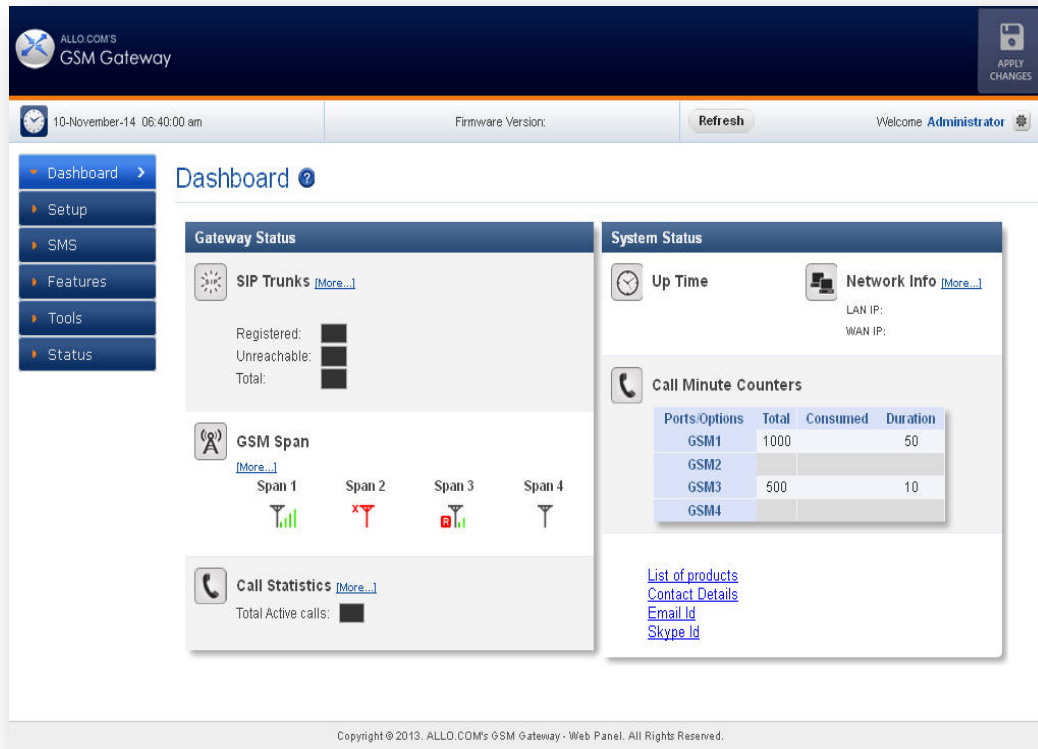


Figure 4: Dashboard

## Software Installation Steps

### Creating SIP Trunks

This will allow you to make calls using your VoIP Account.

1) Click **Add a SIP Trunk**

2) Create a SIP account with the preferred registration mode.

Registration Mode:

- **None:** IP peer trunking
- **From Gateway:** Gateway is registering to PBX or VoIP service provider.
- **To Gateway:** Endpoint registering to Gateway.

3) Enter the PBX or VoIP service provider IP address for registration modes "From Gateway or None"

4) Click authentication, if it is required

5) Click registration and add registrar address



6) Click on “Create” to save the settings.

### Creating GSM Lines

This will allow you to make calls using your GSM lines.

- 1) Create GSM lines
- 2) Click on the **SETUP > BASIC > GSM LINES** link in the GUI, and then select **Add New** to **Create GSM Lines**.
- 3) Enter the Span Name, Line Name and Bridge Pin and Click Save.
- 4) Click on “Save Button” to save the settings.

### Create/Compose SMS

- 1) Click on the **SMS > CREATE/COMPOSE** link in the GUI, and then create an individual or multiple groups.
- 2) This will allow you to send one to one message and also bulk SMS. The customers can upload the lists of message recipient's in.CSV format.



*Click on “Send” to send the message to the recipient's.*

**THE FULL VERSION MANUAL WILL PROVIDE YOU DETAILED INSTRUCTIONS ABOUT THE FULL FEATURE SET OF THE ALLO GSM GATEWAY.**

**THANK YOU!**

Thank you for choosing



Adarsh Eco Place, #176, Ground Floor, EPIP Industrial Area, Kundalahalli  
KR Puram Hobali, Whitefield, Bangalore - 560066.

Email: [globalsales@allo.com](mailto:globalsales@allo.com)  
[indiasales@allo.com](mailto:indiasales@allo.com)

Phone: +91 80 67080808