

Analog Active Card



Configuration with 3CX
Phone Systems

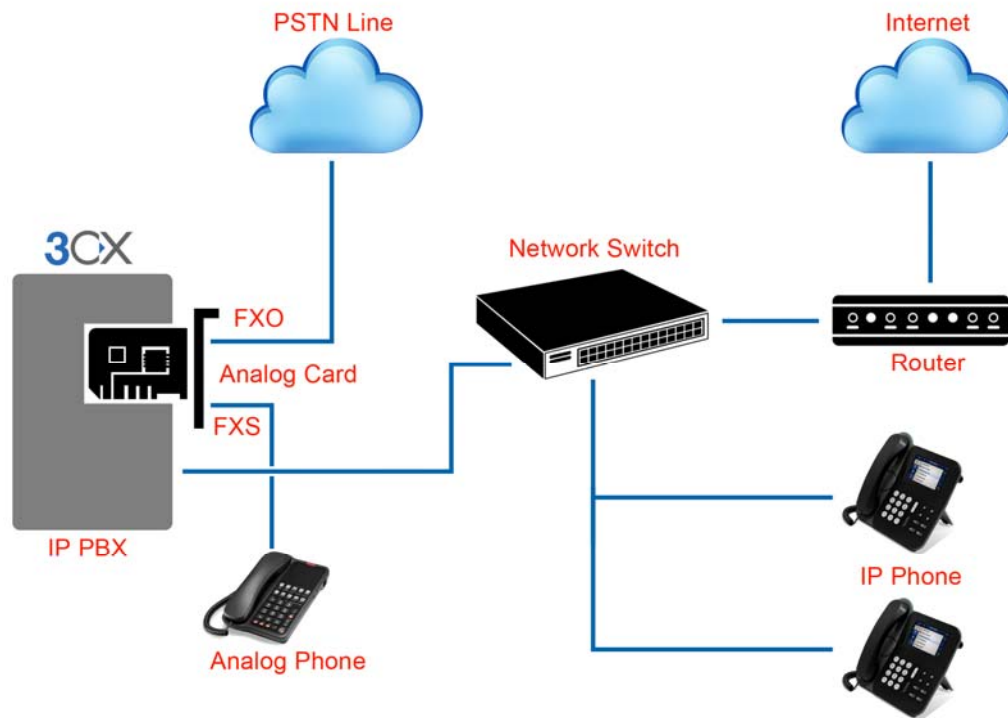
ALLO Analog Card configuration with 3CX Phone System

This document describes a typical deployment scenario of ALLO Analog Card with 3CX Phone System in an Office Telephony environment.

The Analog Card provides the following functionalities.

FXS Modules – connectivity to analog phones and fax machines, analog trunking to legacy PBX

FXO– PSTN Line Termination for outbound/Inbound calls



System Requirement:

- Operating System : Windows XP/ Windows 7/ Windows Server 200X
- 3CX phone system 10 and above
- Dual Core Processor with 1 GB RAM
- Available PCIe slot

1. 3CX Phone System Configuration

- 1) Go to VoIP/ PSTN gateways and click “Add PSTN Gateway”.
Select the Brand as Generic & Model as “ Gateway Device”

3CX VoIP/PSTN Gateways

Add Gateway Wizard

Add PSTN Gateway

Name	Analog_GW
Brand	Generic
Model	Gateway Device
Description	Custom Generic Gateway Device
URL	http://www.3cx.com

More vendor supported gateways can be found here: <http://www.3cx.com/voip-gateways/index.html>

- 2) Click Next and enter gateway IP address (this is the same IP that is assigned to ALLO Analog Card) as below.
In this example, the Gateway ip address(Analog Card IP address) is 192.168.0.68

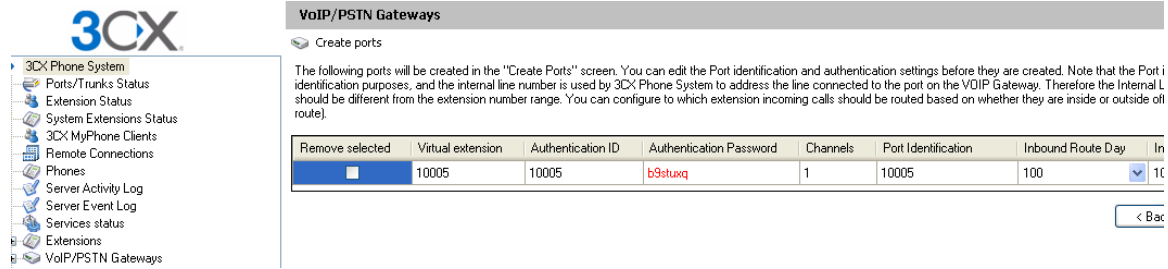
3CX VoIP/PSTN Gateways

Specify VoIP Gateway Details

VOIP Gateway

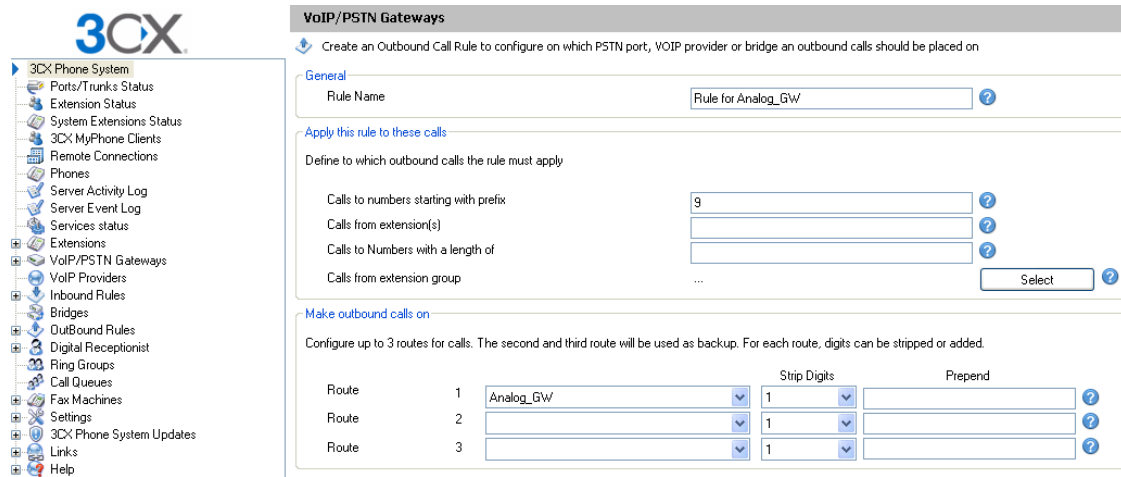
Gateway Hostname or IP	192.168.0.68
Gateway Port (default is 5060)	5060
Number of ports	1
Type	Analog
Number of channels per port	1

- 3) Click Next and it will generate the following parameters
The “Create Lines” page allows you to configure each channel’s parameters, namely:
 - a. Virtual Extension Number
 - b. Authentication ID
 - c. Authentication Password
 - d. Number of simultaneous calls that the channel can handle
 - e. The Port Identification (External Number) of the channel
 - f. The destination of calls that are received by the channel – These values are pre-populated, but may be changed at this point based on your need. 3CX configuration file will be generated using the parameters supplied in this page.

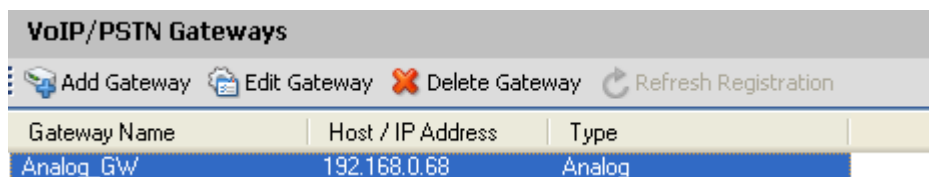


4) Click next and it will prompt you to create outbound rules.

In this example we have given “9” as a prefix & stripping Digit “1”



5) Go to VoIP/PSTN gateways and Select and Edit the gateway



- Click on Edit gateway and Go to Inbound parameters.
 Make the Following Call source Identification:
 SIP Field: “Contact: Host Part”
 Variable: “Custom IP Range”
 Custom Value: Enter the Gateway IP Address (Analog card IP)
 (Eg: 192.168.0.68)

Edit Gateway

Edit Gateway settings and click OK or Apply to save changes.

General Advanced Outbound Parameters **Inbound Parameters** DID

Call Source Identification

The source of incoming calls must be identified. Configure how 3CX Phone System should identify calls from this gateway.

Matching Strategy Match All Fields

SIP Field	Variable	Custom Value
Contact : Host Part	Custom IP Range	192.168.0.68

Add/Update Delete Clear Selection

SIP Field	Variable	Custom Value
-----------	----------	--------------

Click Add/Update.

Edit Gateway

Edit Gateway settings and click OK or Apply to save changes.

General Advanced Outbound Parameters **Inbound Parameters** DID

Call Source Identification

The source of incoming calls must be identified. Configure how 3CX Phone System should identify calls from this gateway.

Matching Strategy Match All Fields

SIP Field	Variable	Custom Value
Contact : Host Part	Custom IP Range	192.168.0.68

Add/Update Delete Clear Selection

SIP Field	Variable	Custom Value
Contact : Host Part	Custom IP Range	192.168.0.68

Click Apply and OK.

7) Click finish and Go to Port/Trunks Status

3CX

3CX Phone System

- Ports/Trunks Status
- Extension Status

Ports/Trunks Status

Disconnect Call

Status	Virtual Extension Number	Type	Name	IN/DUT	Caller ID	Dest
Not Registered	10005	Gateway	Analog_GW			

8) Double click on the 10005 and note down the username and password details, which need to be configured in Analog gateway as a SIP trunk.

2. ALLO Analog Card configuration

For Analog card installation, refer quick installation guide:

- 1) Open GUI of the analog gateway and Go to Trunks (Analog&SIP) and Click on VOIP Trunks and Create New SIP trunk.

Create New SIP trunk

Type:

Context Naming ⓘ: Based on Username

Provider Name ⓘ:

Hostname ⓘ:

Hostport ⓘ:

Username ⓘ:

Password:

DID Routing:

Registration:

- 2) Select Type SIP and enter all the details as shown below.
In this example, the IP address of 3CX IPPBX is 192.168.0.104

Create New SIP trunk

Type: SIP

Context Naming ⓘ: Based on Username

Provider Name ⓘ: 3CX

Hostname ⓘ: 192.168.0.104

Hostport ⓘ: 5060

Username ⓘ: 10005

Password: *****

DID Routing:

Registration:

Note: Username and Password should be the same as provided in 3CX trunk Configuration.

If you want DID routing, you can check the DID Routing Check Box. All the calls coming inside the gateway through this 3CX trunk will go to DID routing table.

- 3) Click SAVE and APPLY CHANGES. You can see the registered Status in the System Status page.

- 4) Create Outgoing Calling Rule for the gateway to reach the 3CX PBX and add it to Dial Plan.

- 5) Creating Incoming Calling Rules in Analog gateway. Go to Incoming calling rules and Create New incoming Calling Rule

Click Update and Apply Changes. All the calls are coming from 3CX PBX to gateway will land on extension 1000.

Thank you